

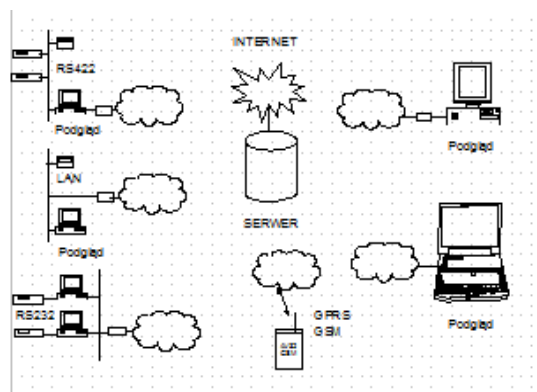
## Web presentation of measurements program APEK NetPrezenter

APEK NetPrezenter

### General information:

The program uses the net to supervisory control and monitoring and also to check measuring and control systems. It works very well both in large-scale distributed monitoring systems as well as in simple measurements with a single hub. Simple operation and flexible grouping system of measurements, previously unattainable in other solutions allowed to create a system with the highest functionality of the monitoring programs. Program has multilevel security against loss of measurements in case of failure of information systems.

The program can work with all products APEK with module LAN or with products which are connected to computer with net. The program makes available measurements in programming cycles: monthly, weekly or daily and also directly from the server.



Used in the program latest Internet technology provides a simple, fast and reliable access to the measurements.

The program is based on the most safe network protocol HTTP.

### Modules of the system:

#### 1. Alarm SMS notification.

Exceeding the alarm settings will send SMS (and / or e-mail) to the customer's mobile phone. Control refers to both the level and duration of the alarm.

#### 2. Graphic and data table presentation.

Preview current or archived measurements on the Internet. Wherever you are if you have a computer with the net you can look through the measurements. Program also enable to save measurements on local computer.

#### 3. Preview module in mobile phone.

If you have a mobile phone with the net you can have a view of the current measurements. This service along with the SMS notification is an effective method for making remote actions in cases of emergency.

#### 4. Module of supervision over the system.

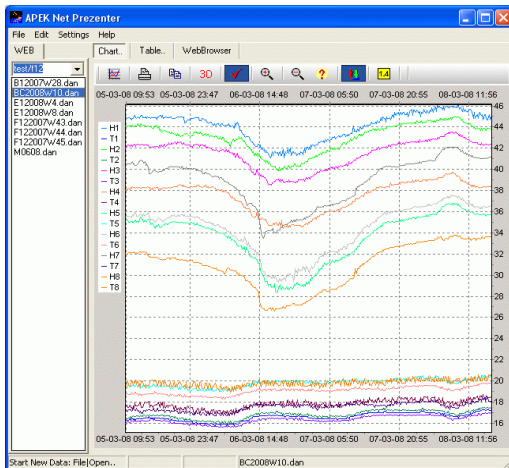
The supervision over the all system. In case of irregularities, is notified a service that takes appropriate action to repair the system.

### Application:

- Distributed monitoring systems.
- Supervision of climatic chambers and refrigerators.
- Supervision of technological processes.
- Blood banks.
- Supervision of production.
- Monitoring of the climate in laboratories.
- Pharmaceutical magazines.
- Supervision of distribution of media.
- Research and long-term tests.
- Heat cost allocators.

### Chart Tab:

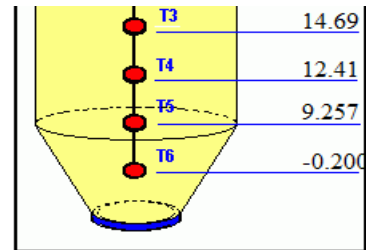
- Graphs of chosen objects.
- Presentation of current and archival measurements.
- Moving or resizing of chart.
- Automatic matching.
- Simple transmission measurements to popular spreadsheets.



### WebBrowser Tab:

The tab using for description of objects, include:

- Graphic presentation of measuring points.
- Displaying of the current measurements.
- Configuration and alarm histories.
- Maximum and minimum values in measuring cycle.



Information page which is projecting for every objects allow specific needs of user.

### Table Tab:

- Presentation of measurements in table.
- The possibility copy of measurements on local computer.
- Transfer measurements to the editor, edit the measurements.

The screenshot shows the 'Table' tab in the APEK NetPrezenter application. It displays a table with columns for DateTime, H1, T1, H2, T2, H3, T3, H4, T4, H5, T5, H6, and T6. The data is organized into rows, with the first row showing the current time and measurements, and subsequent rows showing historical data.

DateTime	H1	T1	H2	T2	H3	T3	H4	T4	H5	T5	H6	T6
03-03-08 23:45	46.1	16.2	45.1	16.4	43.5	16.1	39.4	17.4	35.8	19.0		
03-03-08 23:48	46.5	16.1	45.0	16.4	43.4	16.1	39.3	17.4	35.8	19.0		
04-03-08 00:08	46.5	16.1	45.0	16.4	43.4	16.1	39.3	17.4	35.8	19.0		
04-03-08 00:28	46.4	16.1	45.0	16.3	43.5	16.0	39.4	17.6	36.0	18.9		
04-03-08 00:11	46.4	16.1	45.1	16.3	43.4	16.0	39.3	17.7	36.0	18.9		
04-03-08 00:31	46.6	16.1	45.3	16.5	43.7	16.0	39.5	17.3	35.9	19.2		
04-03-08 00:34	46.5	16.1	45.1	16.4	43.6	16.0	39.4	17.6	36.1	18.9		
04-03-08 00:54	46.6	16.1	45.2	16.5	43.7	15.9	39.4	17.6	36.1	19.1		
04-03-08 00:57	46.7	16.1	45.1	16.3	43.6	16.0	39.3	17.5	36.1	19.0		
04-03-08 01:17	46.3	16.2	45.1	16.5	43.7	16.0	39.4	17.3	36.1	19.2		

