

**Multichannel temperature measuring system
AL154S15****AL154S15****General informations:**

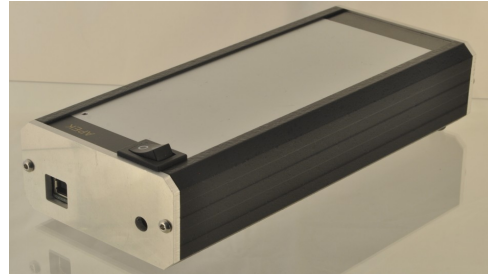
Multichannel measuring system, thermally and mechanically reinforced. The instrument is enable to do max 15 thermocouple measurements with cold-junction compensation. Programming possibility to change configuration: on and off channels, measurement frequency, number of decimal places, measurement averaging.

Application:

AL154S15 has application in measurements temperature and temperature profile in technological lines.

Casing:

- Aluminum body and sides.

**Casing in one side:**

- Supply input: 6-12V slot 5.5/2.1
- Supply on-switch.
- Port USB

**Eight inputs:**

- 9 - +T1 input
- 5 - -T1 input
- 21 - +T2 input
- 17 - -T2 input
- 8 - +T3 input
- 4 - -T3 input
- 20 - +T4 input
- 16 - -T4 input
- 7 - +T5 input
- 3 - -T5 input
- 19 - +T6 input
- 15 - -T6 input
- 6 - +T7 input
- 2 - -T7 input
- 18 - +T8 input
- 14 - -T8 input
- 1 - analog GND

Fifteen inputs:

- 9 - T1 input
- 21 - T2 input
- 8 - T3 input
- 20 - T4 input
- 7 - T5 input
- 19 - T6 input
- 6 - T7 input
- 18 - T8 input
- 5 - T9 input
- 17 - T10 input
- 4 - T11 input
- 16 - T12 input
- 3 - T13 input
- 15 - T14 input
- 2 - T15 input
- 13,25,12,24,11,23,1
0,22 - GNDA



Sensor input Cannon 25PIN

Technical parameters:

- From 1 to 15 thermocouple input: K, J,¹⁾
- Range of measurement: A from -60°C to 1150°C
B from -40°C to 400°C
- Precision of measurement:
 - <0.4°C in range of from -40°C to 400°C
 - <1°C for temperature >400°C and <-40°C
- Resolution 0.1°C or 1°C, programming.
- Memory of measurement: **0.5MB** / 1.5MB / 3MB.
- Power supply 12-24V/300mA or USB port.
- Supply current 50mA.
- Display LCD 4x20 marks.
- Accumulator 3.6V 1800mAh, optionally.
- Version with accumulator 35h.
- Communication: **USB** / RS232 / RS422.
- Sample rate: from 0.5s to 8h.
- Galvanic isolation of communication circuit.
- Dimension: LxSxG 190x80x40mm.

1) accessible inputs for another type of sensors

Method of sign and reserve:

AL154S15.SY.Q.X.Y.XY.Z

SY-kind of thermocouple and number of inputs K,J.
ex. ..K8.. – 8 inputs, kind K.

Q- range of measurement: A full ex. from -60°C to 1150°C, B limited from -40°C to 400°C.

X- communication: 1- for USB,
2- for RS232, 4- for RS422.

Y-supply: A- built-in accumulator,

B- power supply with USB port and with accumulator, M- without accumulator, S-without accumulator, only with USB port.

XY-memory of measurement: NM – without mem.,
M0- 0.5MB, M1- 1MB, M2- 1.5MB, M3- 3MB.

Example:

AL154S15.K8.A.1.B.M1

Producer stipulate possibilities to make change, which cannot be included in this document.